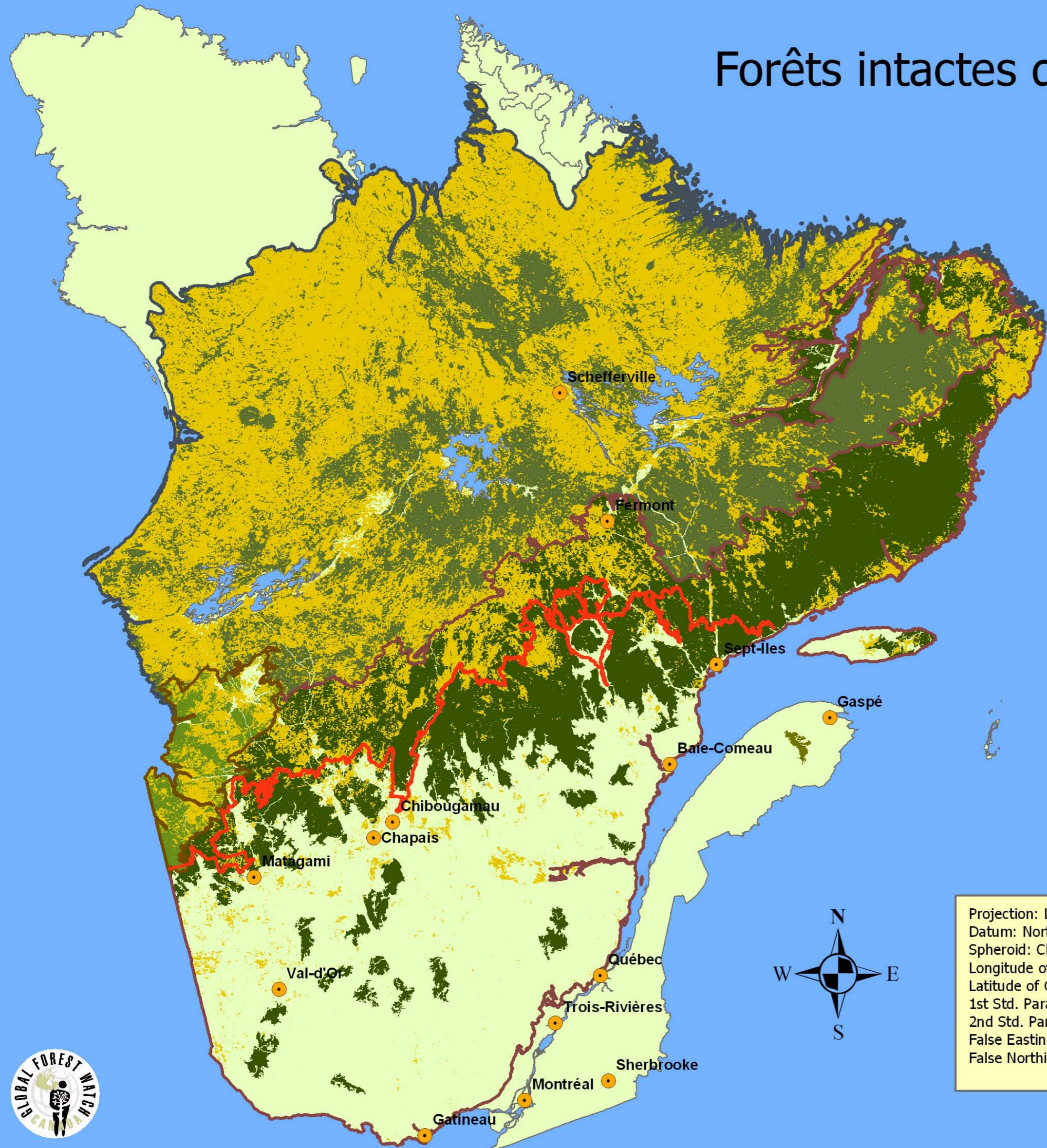


Forêts intactes de plus de 500 km²



- Villes et villages
- Limite nordique de coupe
- Zone sans arbres
- Québec-Labrador

Écozones à l'intérieur de la zone d'étude

- Bouclier boréal
- Plaines hudsoniennes
- Bouclier de la taïga

Grandes zones de forêts intactes

- Bouclier boréal
- Plaines hudsoniennes
- Bouclier de la taïga
- Maritime de l'Atlantique

Projection: Lambert Conformal Conic
 Datum: North American Datum 1927
 Spheroid: Clarke 1866
 Longitude of Origin: 95 00 0.000 W
 Latitude of Origin: 49 00 0.000
 1st Std. Parallel: 49 00 0.000
 2nd Std. Parallel: 77 00 0.000
 False Easting: 0.00000
 False Northing: 0.00000

Draft map prepared January 29, 2007 using publicly available datasets. The intact forest landscapes forest dataset is available at www.globalforestwatch.ca.

For the purpose of this map, only intact forest landscapes larger than 500 square kilometres were selected. The data is based on Landsat imagery acquired in approximately the year 2000.

