

# Forest Cover Change Assessment

## Case Study: Sud Hevea in Cameroon

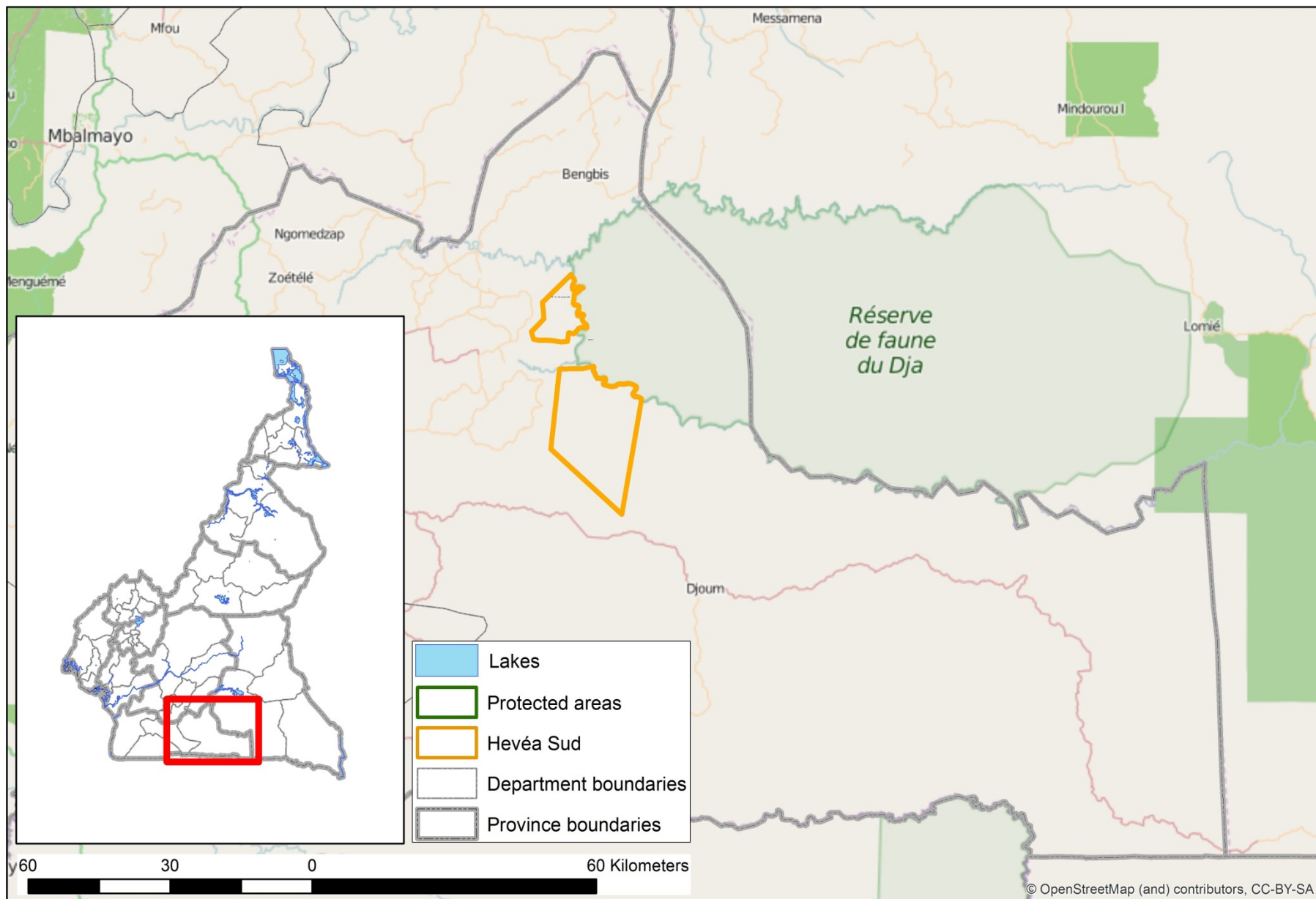
Anna Komarova  
Ilona Zhuravleva

GIS Center, Greenpeace Russia

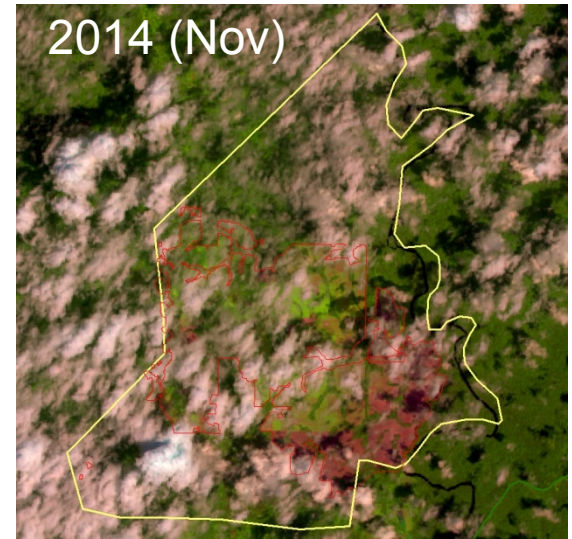
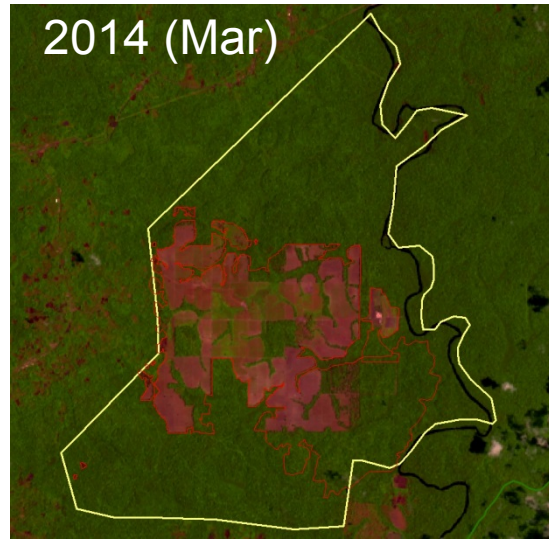
December 2014

**GREENPEACE**

[www.greenpeace.org](http://www.greenpeace.org)



# Forest Cover Change Hevea Sud (North)



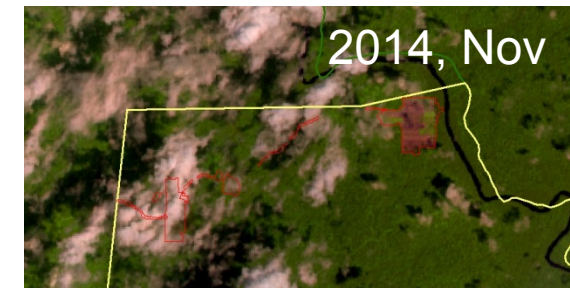
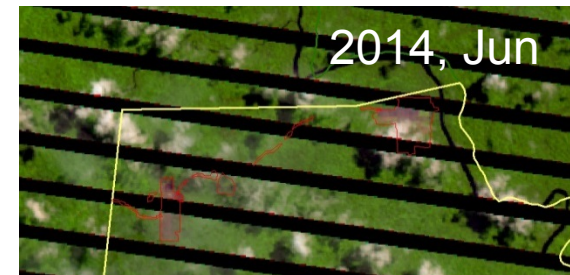
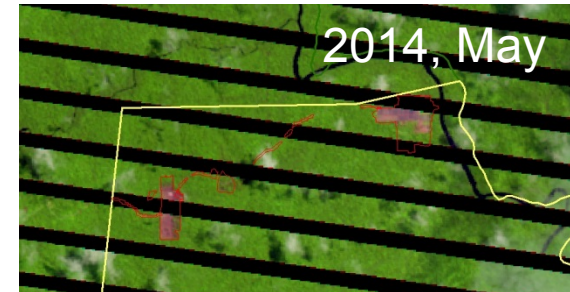
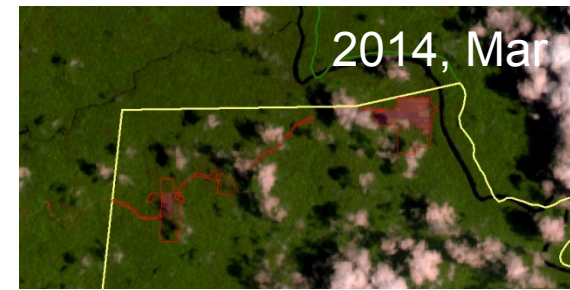
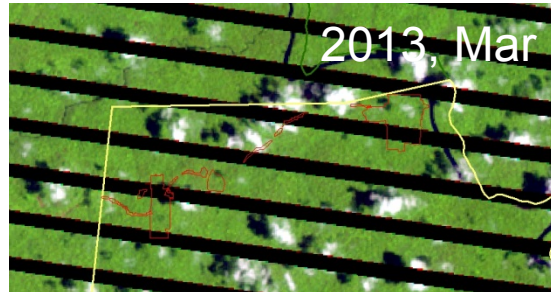
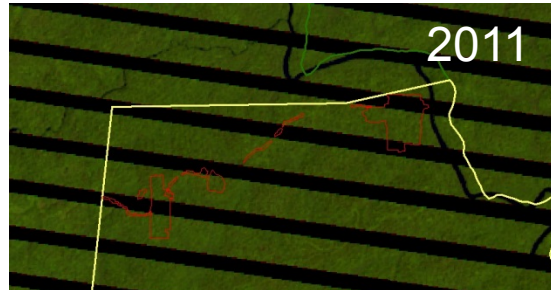
Historical analysis 2011-2014. Landsat images are used as basement



# Forest Cover Change Hevea Sud (South)

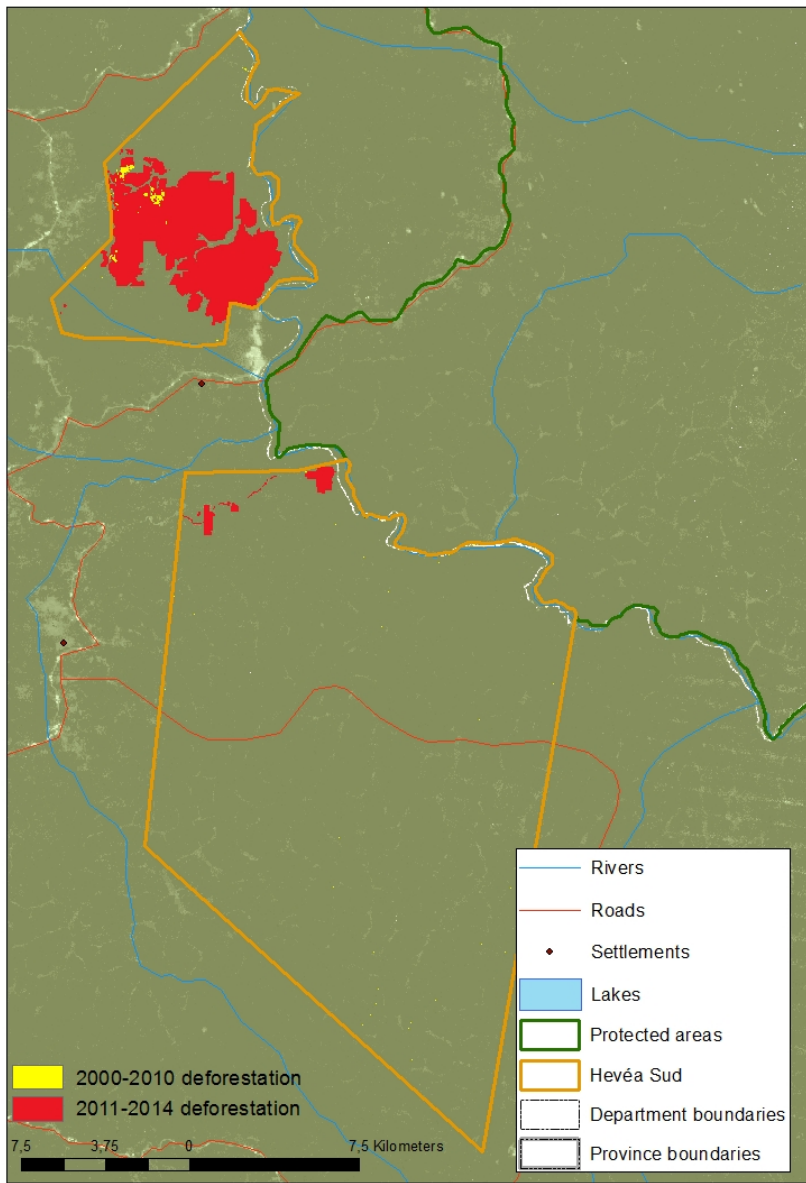


Historical analysis 2011-2014.  
Landsat images are used as basement



GREENPEACE

[www.greenpeace.org](http://www.greenpeace.org)



**GREENPEACE**

[www.greenpeace.org](http://www.greenpeace.org)

# Concession Area Assessment

Land Category			Hevea Sud (North)		Hevea Sud (South)	
			ha	%	ha	%
Non-Forest (or developed forest), 2014			81	0.99	99	0.28
Dense Forest 2014			5 008	61.12	35 478	99.25
Forest Change 2011-14			<b>3 105</b>	37.89	169	0.47
<b>Total Concession Area</b>			8 194	100	35 745	100