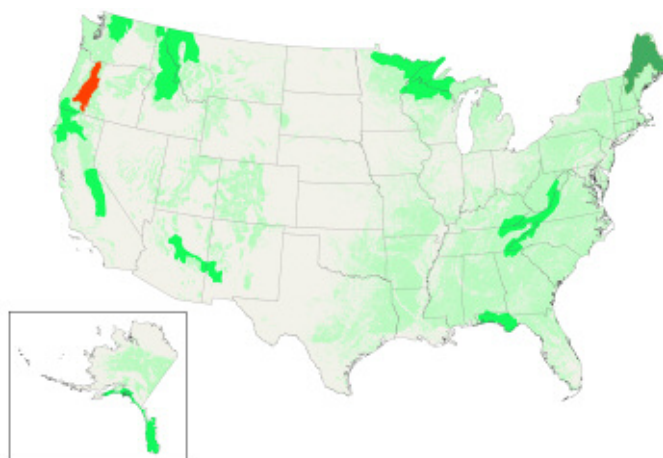


# KEYSTONE FOREST



## Physical Description

The Pacific Northwest Volcanic Keystone Forest is part of the larger Central and Southern Cascade forests. This keystone forest is straight out of a storybook: cascading waterfalls, crystal clear streams and rivers and ancient rainforests. Most of this keystone forest contains the dominant conifers of Douglas fir, Western hemlock, Western red cedar, incense cedar, Pacific yew and a myriad of true fir. At lower elevations, hardwoods such as big leaf maple, vine maple and dogwood are present. The Northern spotted owl is

the most well-known endangered species in the area. However, other threatened species such as the bald eagle, bull trout and a host of salmon also reside in this area. Waldo Lake, considered one of the purest lakes in the world, is located near the Cascade Crest, 60 miles southeast of Eugene. The city of Eugene gets its municipal water supply from the magnificent McKenzie River, which has its headwaters in the Willamette National Forest. The town of Cottage Grove gets its municipal water supply from Brice Creek, in the northern portion of the

Umpqua National Forest. Outdoor enthusiasts including hikers, rafters, kayakers, bikers, hunters, anglers, mushroom pickers and non-timber product gatherers heavily use this region.

## Threats

The greatest threat to this keystone forest is ongoing logging of ancient forest on public lands administered by the BLM and the Forest Service. Over the next 20 years, 1.1 million acres of late successional and old-growth forest are slated for logging.

## Efforts to Increase Protected Areas

The Lewis and Clark Mount Hood Wilderness proposal introduced by Senator Ron Wyden (D-OR) would add 177,000 acres of wilderness and 48 miles of Wild and Scenic River designation around Mount Hood and in the Columbia Gorge. A small percentage of

## Mount Hood National Forest, Oregon.



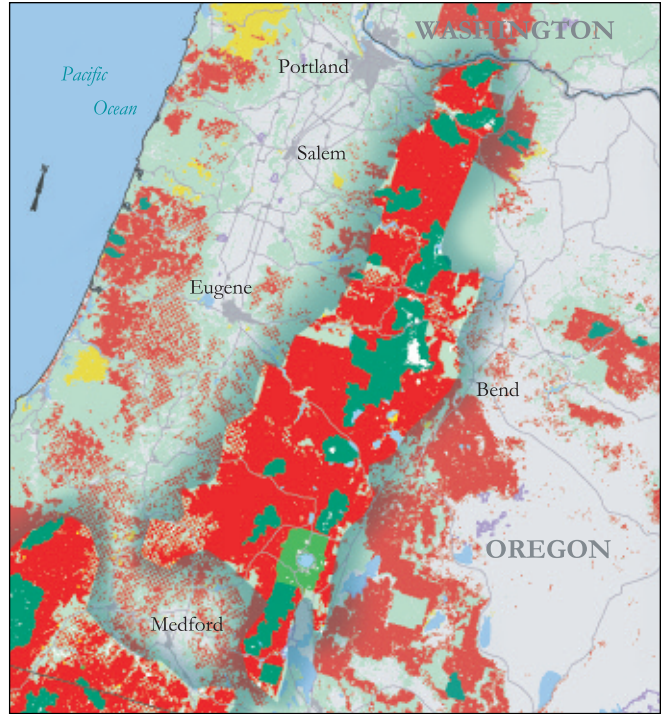
Forested BLM Lands (non-wilderness)	189,291
Forested National Forest Lands (non-wilderness)	3,814,425
Forested National Wildlife Refuge Lands (non-wilderness)	793
Forested National Park Lands (non-wilderness)*	155,929
Forested Wilderness	897,240
Forested miscellaneous public and private preserves	10,664
Privately owned, unprotected forest lands	629,120
<b>Total Forested Lands</b>	<b>5,697,462</b>

\*Available data did not necessarily distinguish wilderness from non-wilderness within national parks, so some wilderness within national parks may be included within this statistic.

© CRAIG TUTTLE/CORBIS



### Forest Quality



### Forest Ownership



this legislation pertains to an eastern portion outside of this keystone forest.

There is a growing campaign to convert much of the northern portion of Mount Hood National Forest to a newly formed Mount Hood National Park. Though the exact boundaries would be determined by a national park feasibility study, probable boundaries could include the Oregon side of the Columbia Gorge, Mount Hood and the backcountry around the mountain, extending south to the Clackamas River. In addition, the campaign is expected to introduce wilderness legislation that includes approximately one million acres of roadless areas in national forest and BLM land.

*Written by Josh Laughlin  
Cascadia Wildlands Project  
[www.cascwild.org](http://www.cascwild.org)*