

Too close for comfort – the Polish government and the Polish coal industry

DONALD TUSK

Prime Minister since 2007

Cofounder of the Civic Platform, which is the center-right ruling party in Poland

KRZYSZTOF KILIAN

President of the board of PGE POLSKA GRUPA ENERGETYCZNA S.A.

Member of the supervisory board of PKO BP

Donald Tusk's close friend, he supported formation of Civic Platform in 2001

ALEKSANDER GRAD

President of the board of PGE EJ 1 sp. z o. o., earlier PGE ENERGIA JADROWA S.A. (PGE ENERGIA JADROWA S.A.)

Treasury Minister 2007–2011

Civic Platform Member of Parliament 2001–2012

MARZENA PISZCZEK

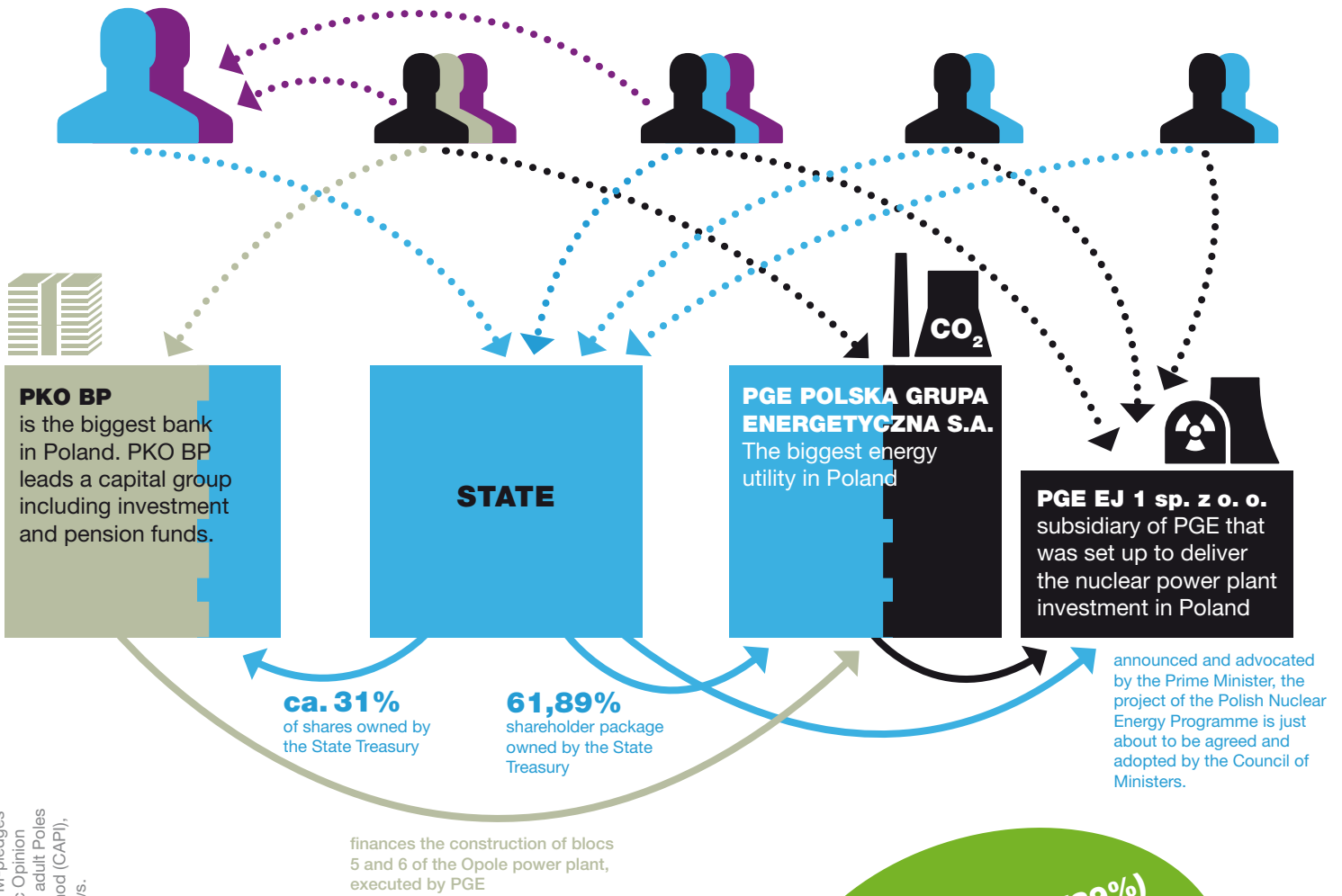
Vice-president of the board of PGE EJ 1 sp. z o. o.

Until 2012 Director in the Krakow branch of the Ministry of Treasury

ZDZISLAW GAWLIK

Vice-president of the boards of PGE ENERGIA JADROWA S.A. and PGE EJ 1 sp. z o.o. 2012–2013

Under-Secretary of State 2007–2012, Secretary of State in the Ministry of Treasury since 2013



"The future of Polish energy is in brown and black coal, as well as shale gas."

Donald Tusk *

The vast majority (89%) of the adult Poles would like more energy coming from the renewable sources in Poland.**

1,5 Oil

2,1 Gas

6,0 Other including renewables

90,4 Coal

Poland's electricity generation mix

Output shares (%) in electricity generation, 2011 Review

*<http://www.theneews.pl/1/12/Artykul/146850,-Poland-will-stick-with-coal-PM-pledges>
 **An opinion poll conducted between 2–11 October 2013 by CBOS (Public Opinion Research Center) on the nationwide, representative and random sample of adult Poles (+18) based on the computer-assisted personal interviewing research method (CAP), commissioned by Greenpeace Poland. The realised sample: 1066 interviews. See <http://www.gkpe.pl/en/shares/shareholders> See <http://www.pkobp.pl/pkobbpl-en/investor-relations/shareholders/> See <http://www.pgeej1.pl/english/about-the-company.html>